

# Safedoor

## Technical Sheet

English (original)  
Version 1.1.3

Made **4**  
**CNC**

The information contained herein is property of Made4CNC ApS and shall not be reproduced in whole or in part without prior written approval from Made4CNC ApS. The information herein is subject to change without notice and should not be construed as a commitment by Made4CNC ApS. This manual is periodically reviewed and revised.

Made4CNC assumes no responsibility for any errors or omission in this document.

Copyright © 2021 by Made4CNC ApS.

The Made4CNC and Safedoor logos is registered trademarks of Made4CNC ApS.

# Technical Sheet SD100

Safedoor is a unique automatic door system, especially designed for robotic tending of CNC machines. The Safedoor system is also an ideal solution for CNC tending without a robot, improving operator ergonomics.

The system contains actuator(s), and a controller which together enables safe, fast and reliable operation of a CNC machine door.

With adjustable travel speed and built-in force monitoring it is capable of safe operation alongside human operators.

## Features

- Easy installation, programming, and risk assessment
- Optimized for integration with collaborative robots
- Fast and silent operation
- Automatic door size adjustment
- Force control optimized for safe and reliable operation
- Emergency stop input for simultaneous stop when CNC and/or robot is emergency stopped.
- Capable of handling both single and double door CNC machines
- Flexible mounting brackets for easy integration with different CNC machines

	Minimum	Typical	Maximum	Unit
Stroke	100	-	1000	mm
Installation length	1224.5		2224.5	mm
	48.2		87.5	inch
Adjustable Speed	280	500	500	mm/s
Open/close time @ 750 mm		3.1		s
Force @ 15 mm opening		108	150	N
Force @ 40 mm opening		124	150	N
Weight of a door		100	400	kg
		220	880	lb

## Specifications

IP rating, controller	IP66				
IP rating, actuator	IP54				
Digital interfaces	URCap, Universal Robots (Polyscope ≥ 3.14 or 5.9) Omron Components, TM Robots (TMFLOW ≥ 1.76.3300) Fanuc Plugin, CRX robots (Version ≥ 9.40P/06) Doosan App, Series A, H and M Robots (Version ≥ V2.7.3) 24V galvanically isolated I/Os				
Dimensions, controller	300	x	300	x	155 mm 11.8 x 11.8 x 6.1 inch
Dimensions, actuator	1224.5 x 284 x 130 mm 48.2 x 11.2 x 5.1 inch				
Weight, controller	6.6				kg 14.5 lb
Weight, actuator	11.2				kg 24.7 lb

## Typical applications

- CNC machine tending by collaborative robots
- CNC machine tending by operators, improving ergonomics
- Automatic operation of CNC machines with one or two doors

## Operating Conditions

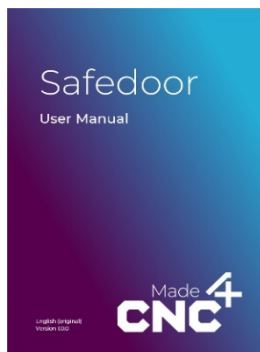
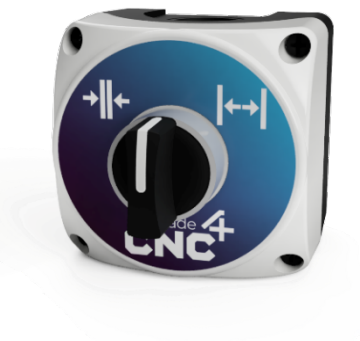
	Min.	Typical	Max.	Unit
Input voltage	90	230/110	260	VAC
Input voltage frequency	47	50/60	63	Hz
External fuse	6	-	16	A
Operating temperature, ambient	0	-	50	°C
	32	-	122	°F
Relative humidity (non-condensing)	10	-	95	%
Calculated MTBF (5 min cycle)	33,000			hours

## What is in the box?

The system is composed of two packages: one with the controller and another package per actuator. Depending on the type of CNC machine, you will need a controller package and either one or two actuator packages.

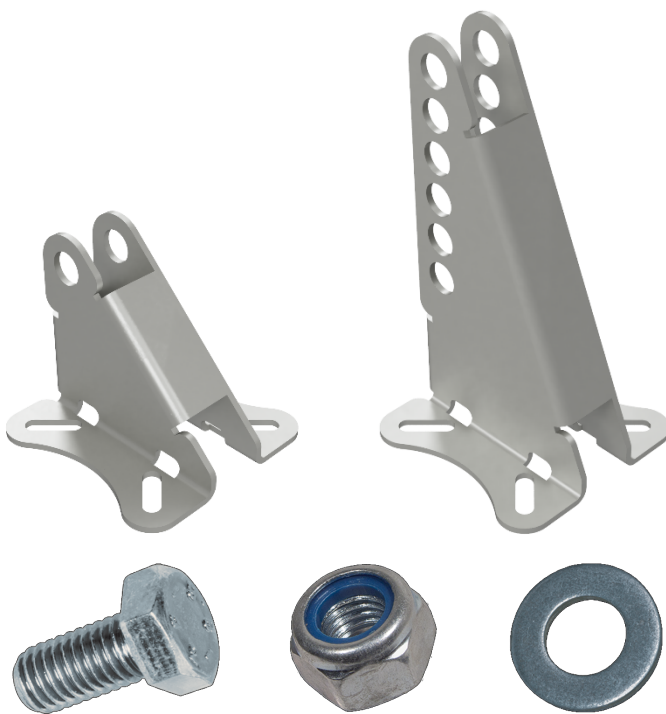
The controller package contains

- Controller board
  - Power supply (110/220VAC to 24VDC)
  - 5m power cable (N+L+PE)
  - Printed instruction manual
- USB stick, containing:
  - Digital instruction manual
  - URCap for [Universal Robots](#) (PolyScope v. 3.14 / 5.9 and above)
  - Components for [Omron TM Robots](#) (TMFLOW 1.76.3300 and above)
  - Plugin for [Fanuc CRX Robots](#) (Controller Software V9.40P/06 and above)
  - App for Doosan Series [A, M and H Robots](#) (Controller software V2.7.3 and above)
- Operator panel with 5m cable



Each actuator package contains:

- Actuator, 1000mm, 300N, 500mm/s
- Low mounting bracket
- Tall mounting bracket
- Bag of mounting fasteners:
  - 2x M12x45 bolts
  - 2x M12 lock nuts
  - 4x M12 washers



Please check that all the parts are present and without defects before starting the installation.